



# Liquid-Cooled Plates

for Battery Energy Storage System

2025.04

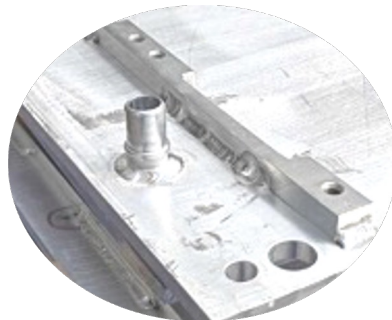
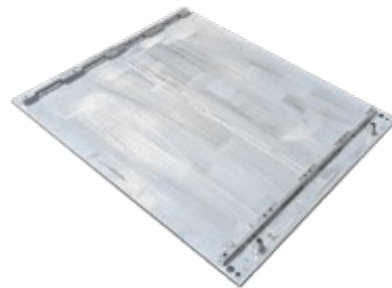
# BESS

Liquid-cooled plates(LCPs) are to cool down the battery cells when charging or discharging.

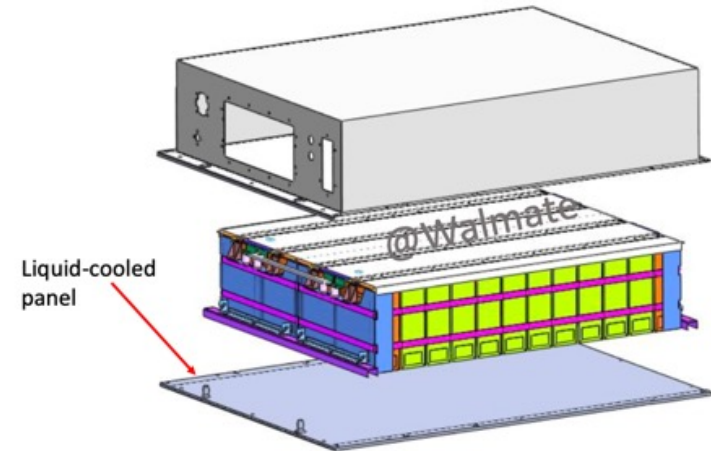
1<sup>st</sup> generation



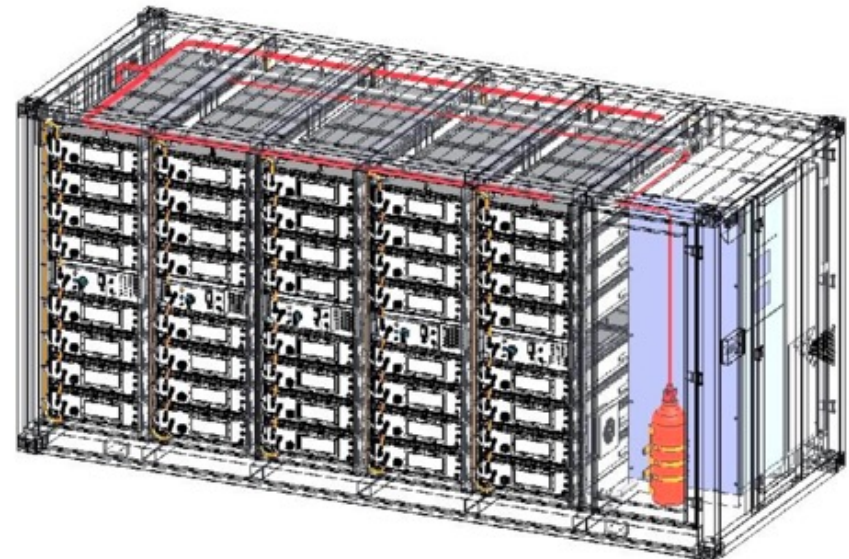
2<sup>nd</sup> generation



Battery Pack



20FT Energy Storage Container



# Mass Productions

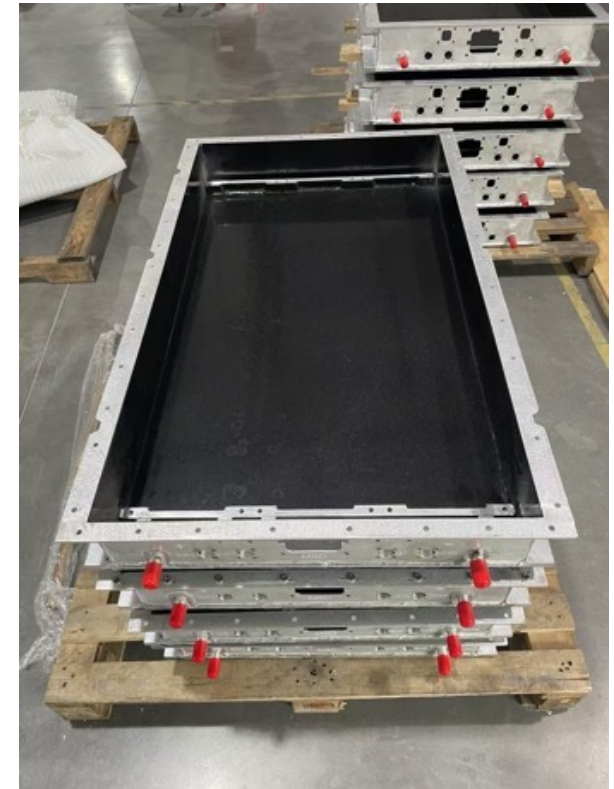
Battery tray 52S, BESS



Battery tray, 104S, BESS

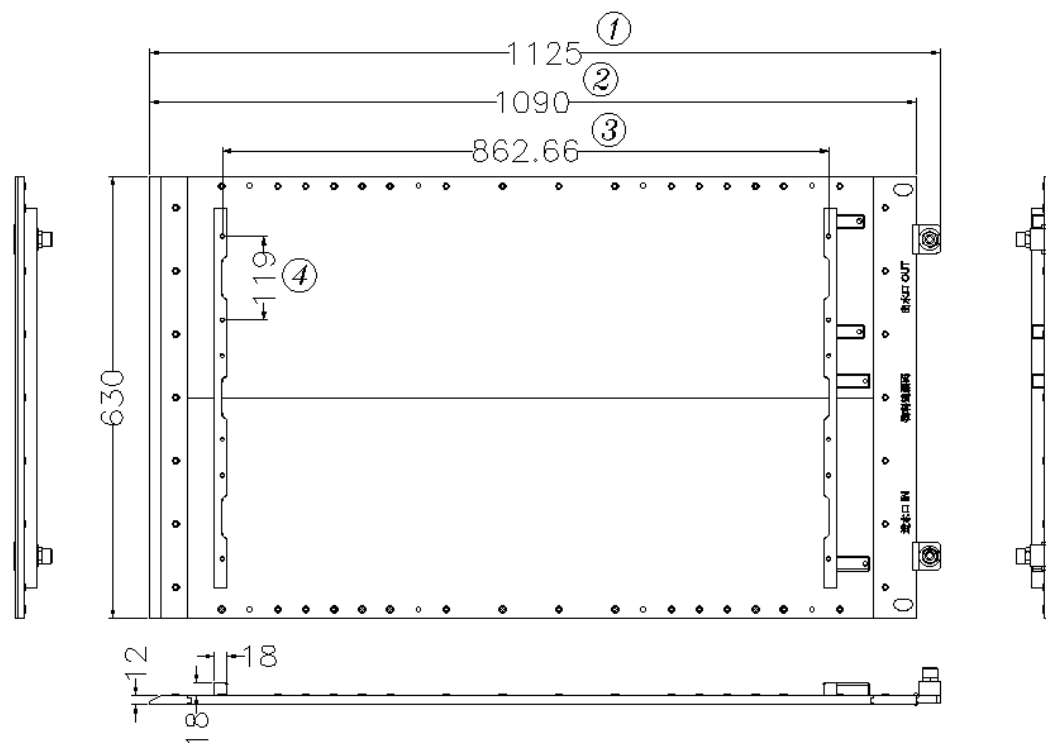


Battery housing for BESS & EV



## Specification of the LCPs

#	Application	P/N Nr	Cell Power	Type	Cell Amounts	W	H	Module L	CC	L	Nozzle size
1	Commercial BESS	MT2408037	280AH	LFP	36S	630mm	12mm	862.66mm	119mm	1125mm	14mm
2	Commercial BESS	5-07-01445	280AH	LFP	48S	776mm	10mm	893.4mm	157mm	1033mm	14mm
3	Commercial BESS	5-07-01612	280AH	LFP	52S	790mm	10mm	966mm	162mm	1138mm	14mm
4	Commercial BESS	5-07-01487	280AH	LFP	52S	810mm	41mm	965.3mm	162mm	1163.3mm	14mm
5	104S BESS	5-07-01540	314AH	LFP	104S	790mm	41mm	977.1mm	159mm	2192.5mm	18mm
6	Commercial BESS	5-07-01573	280AH	LFP	52S	810mm	265mm	963.9mm	159mm	1220mm	18mm
7	End plates	101-01258	314AH	LFP	104S	16mm	175mm	159mm			
8	Commercial EV/Van	5-07-01592	304AH	LFP	36S	622	120mm	893mm	162.5mm	1084mm	16mm
9	Commercial EV/Van	5-07-01593	304AH	LFP	30S	622	120mm	748mm	162.5mm	939mm	16mm



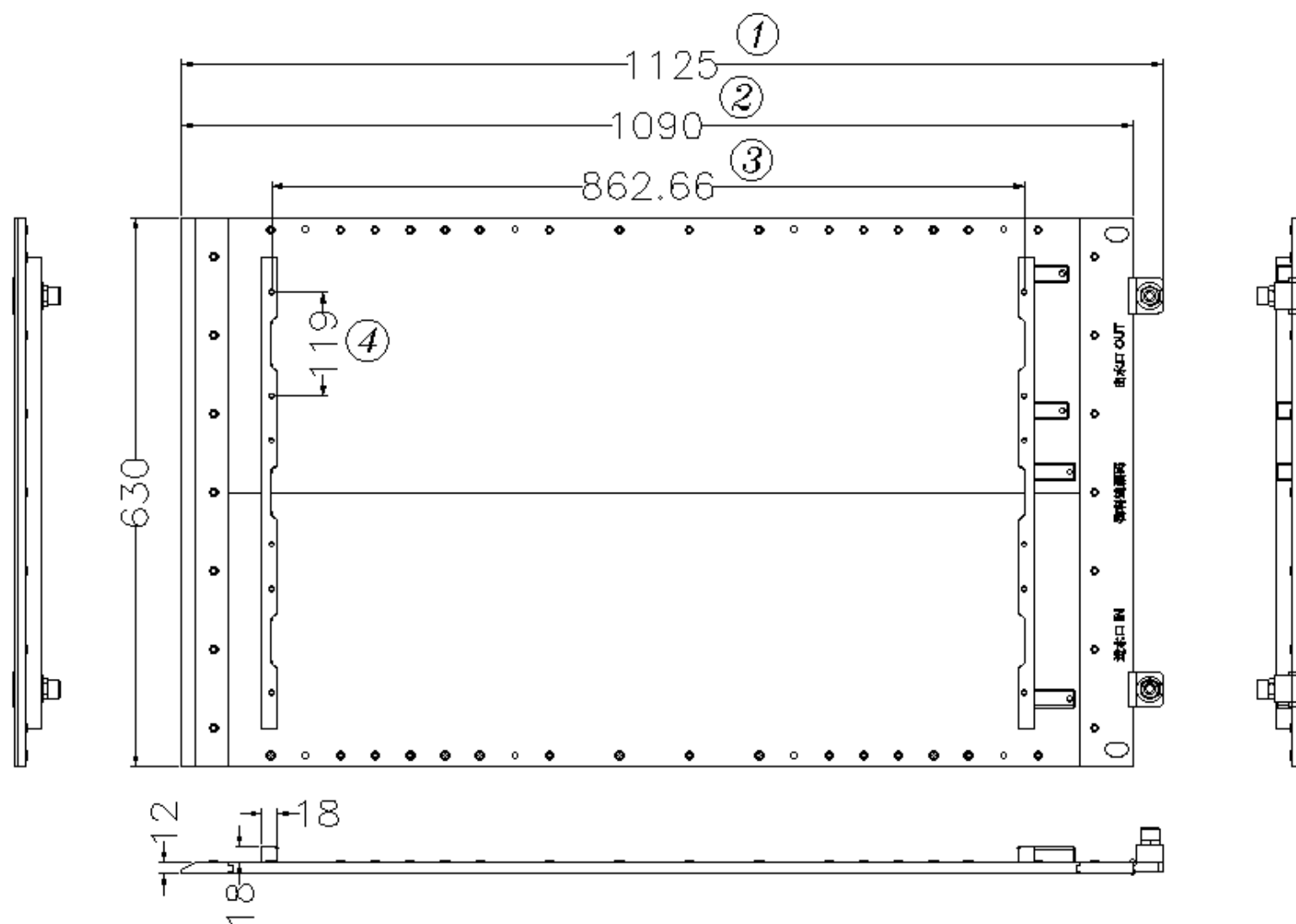
**MT2408037: 280Ah-36S1P**

### Remarks:

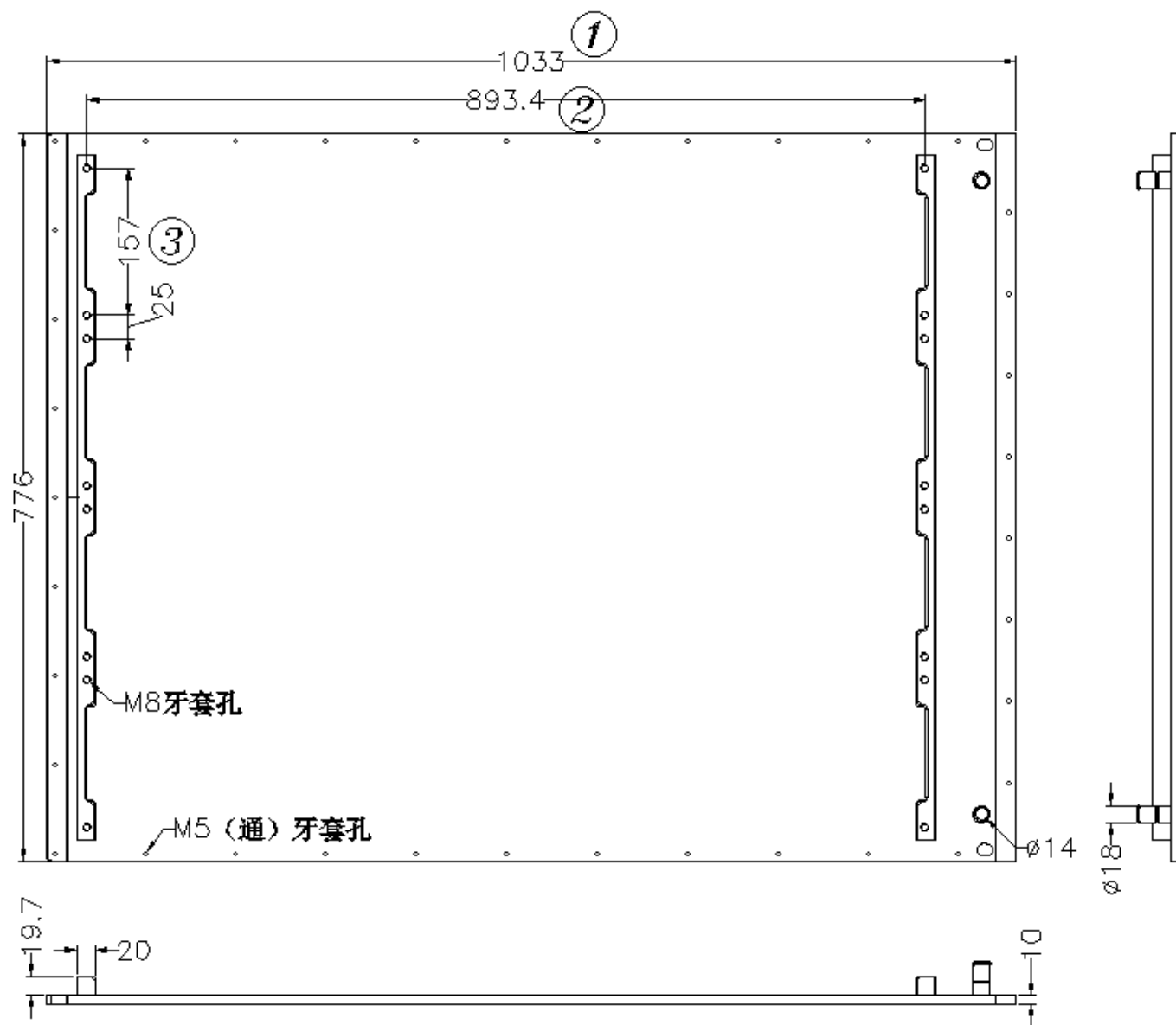
Size 1&2: they are overall length, which could be flexible, can be adjusted according to customer's design.

Size 3&4: can be changed but less flexible, please check with us when you do the amending.

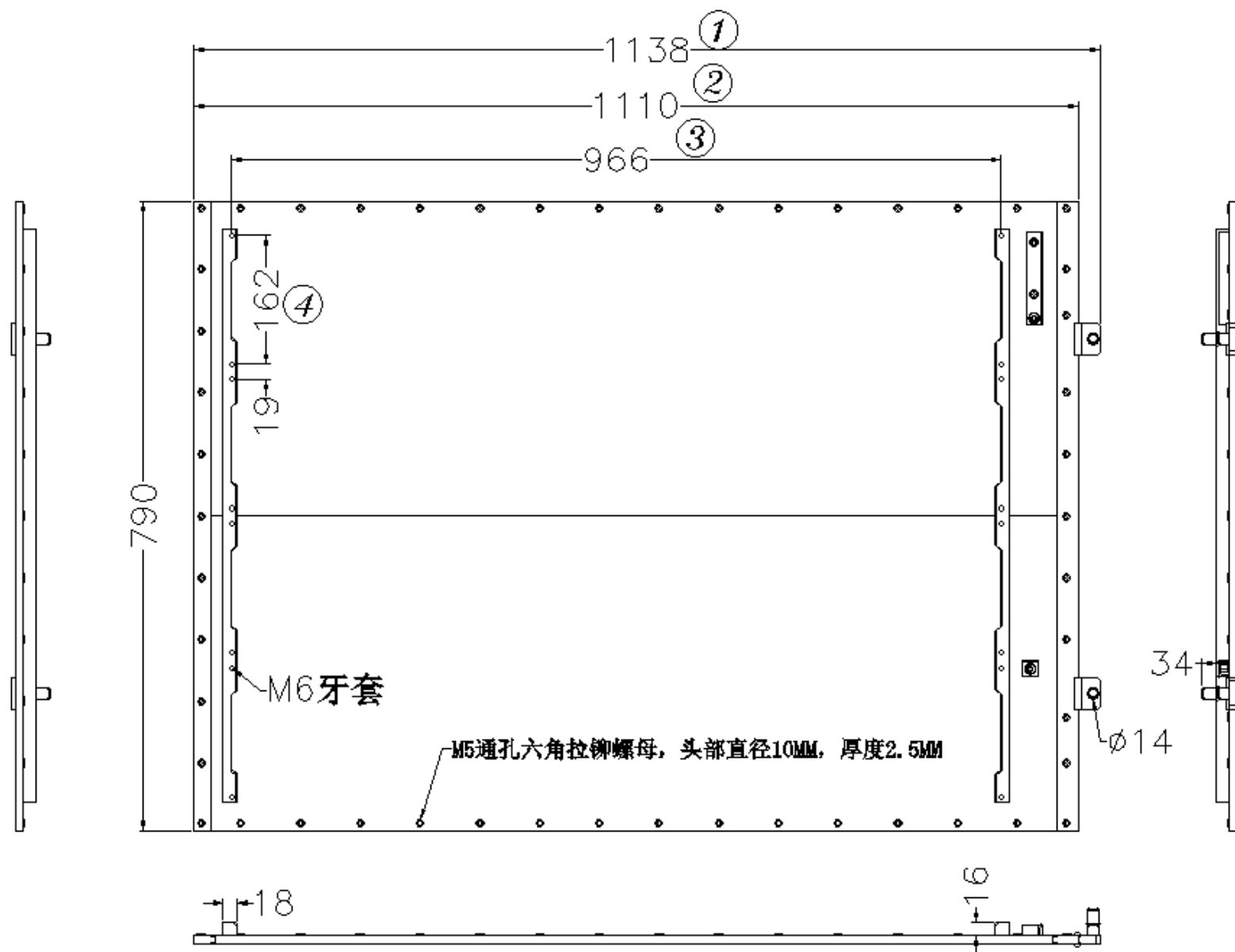
The rest sizes can be adjusted.



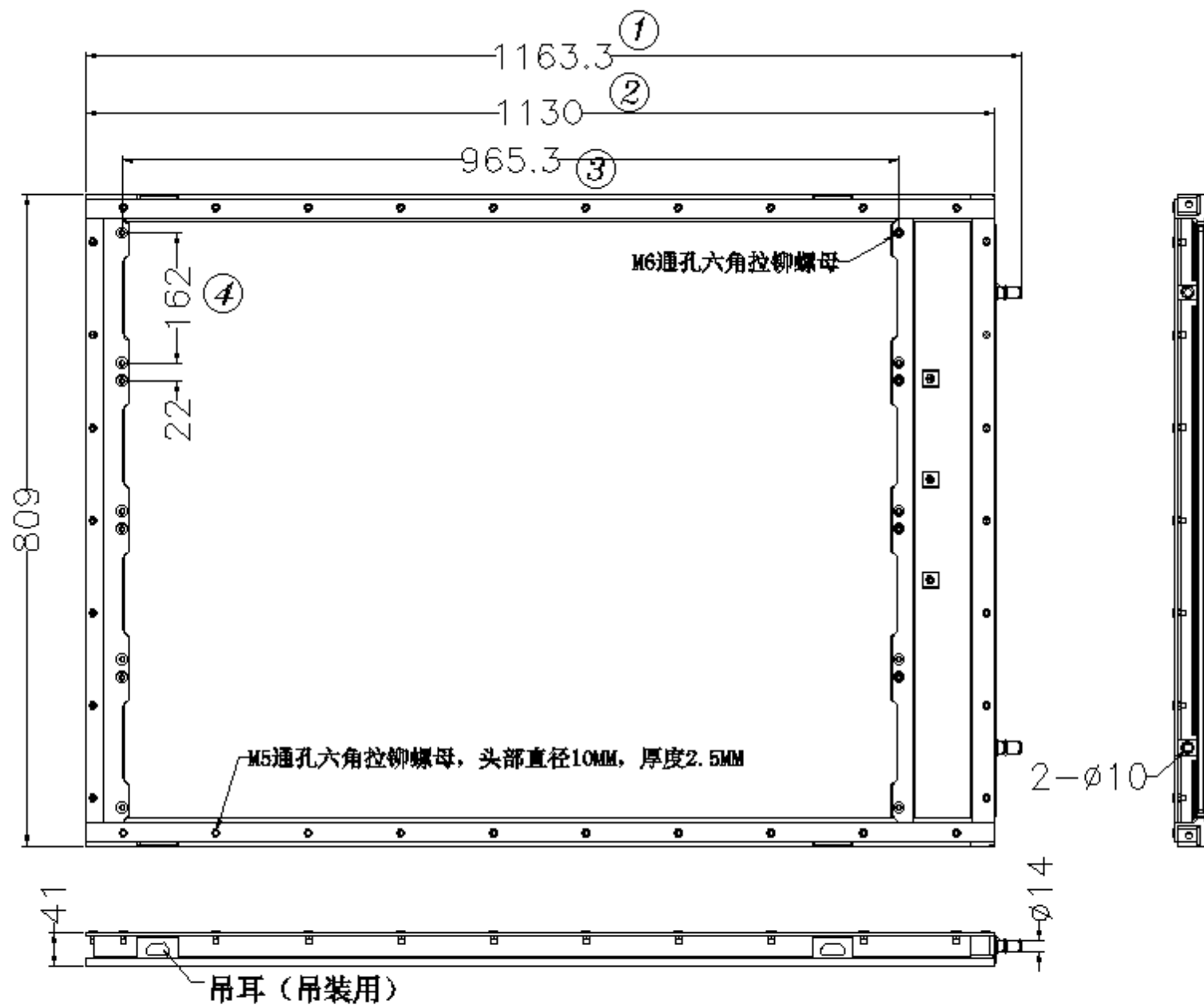
MT2408037: 280Ah-36S1P



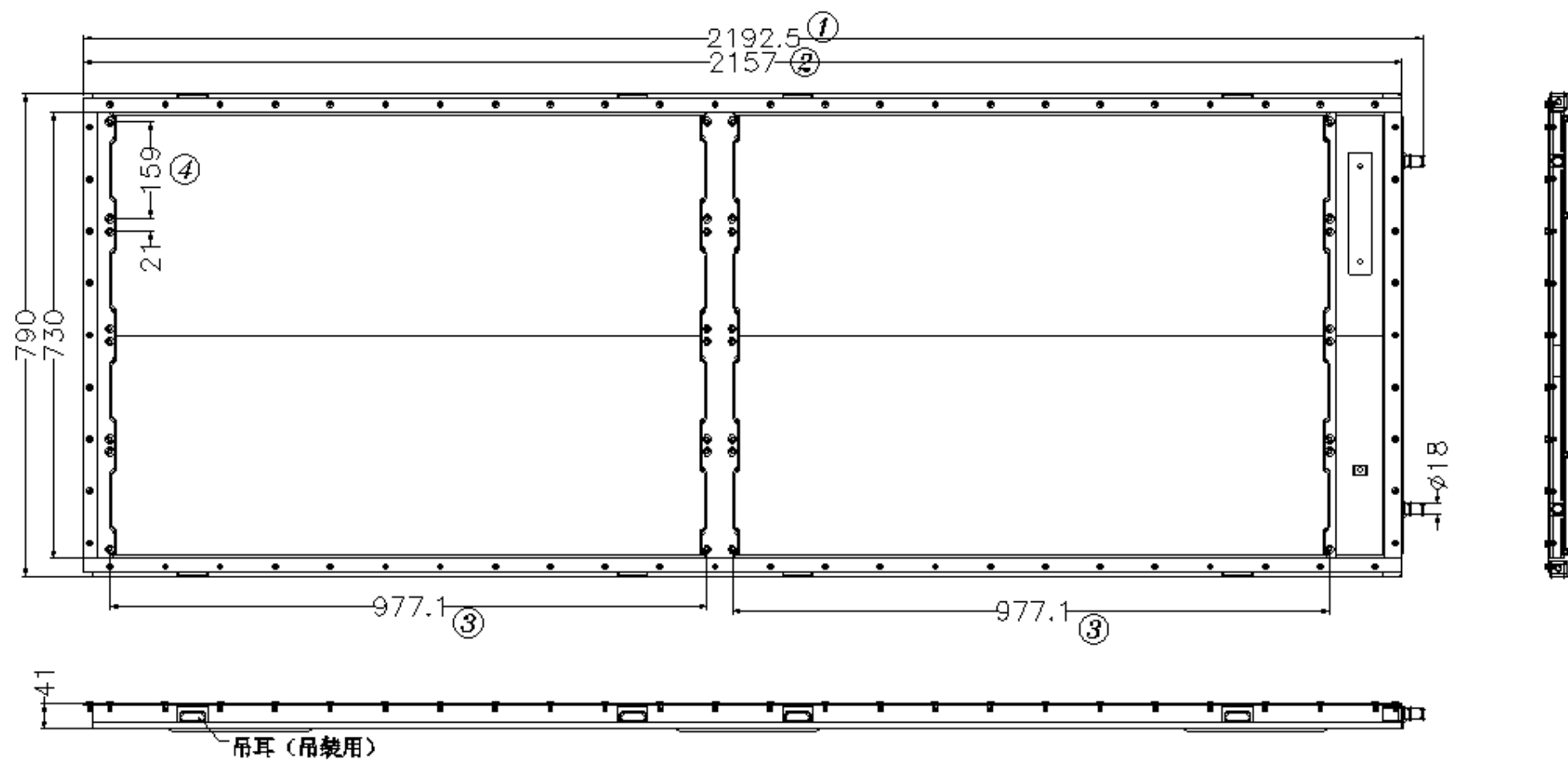
5-07-01445: 280Ah-48S1P



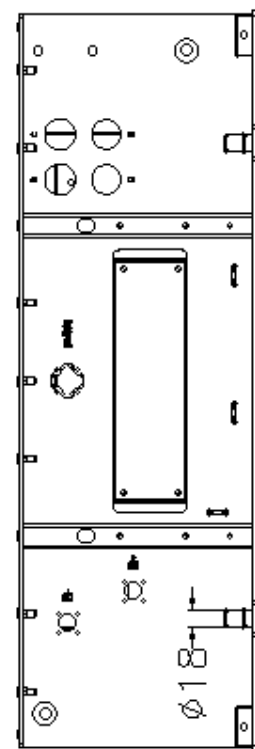
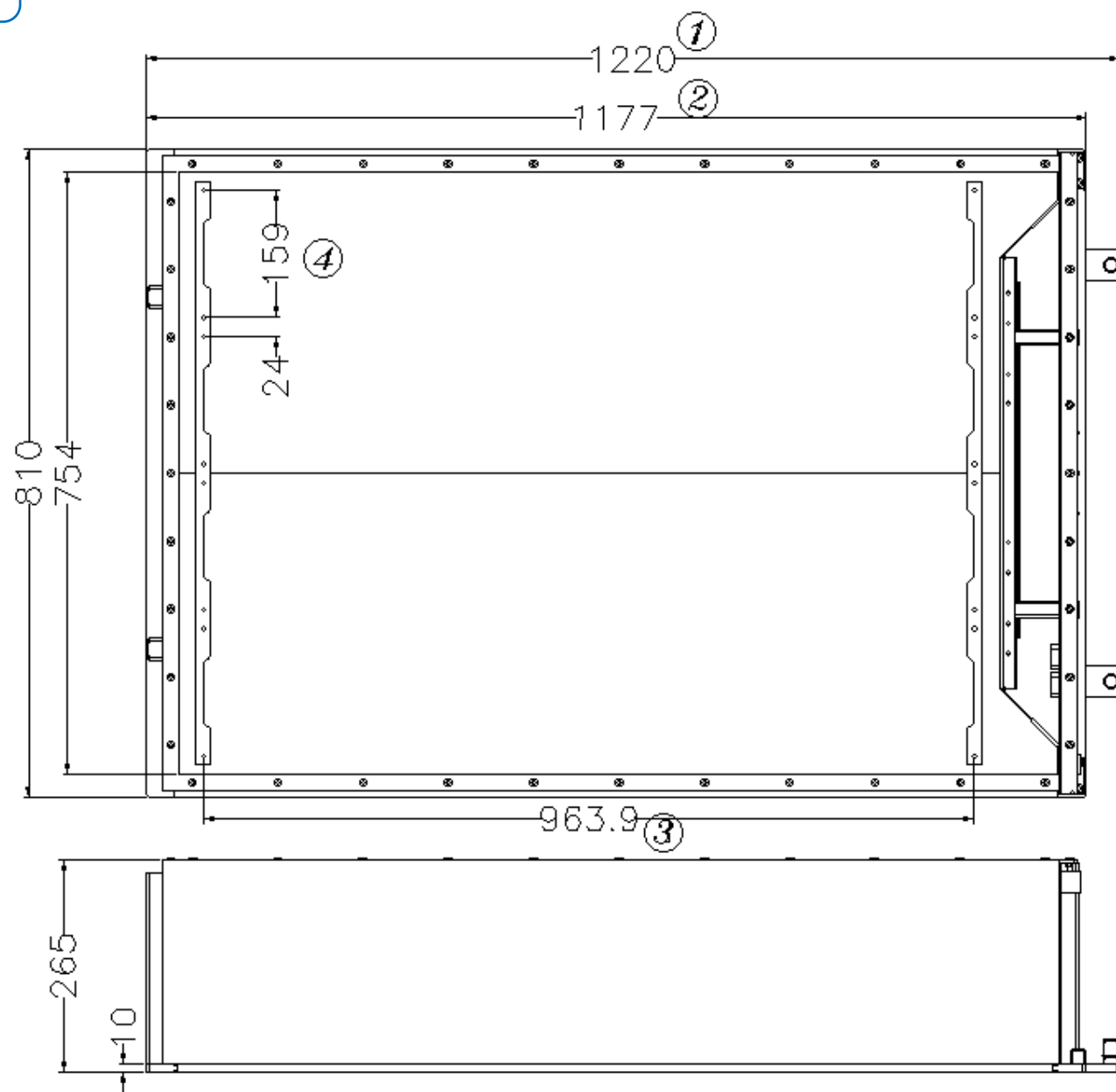
5-07-01612: 280Ah-52S1P



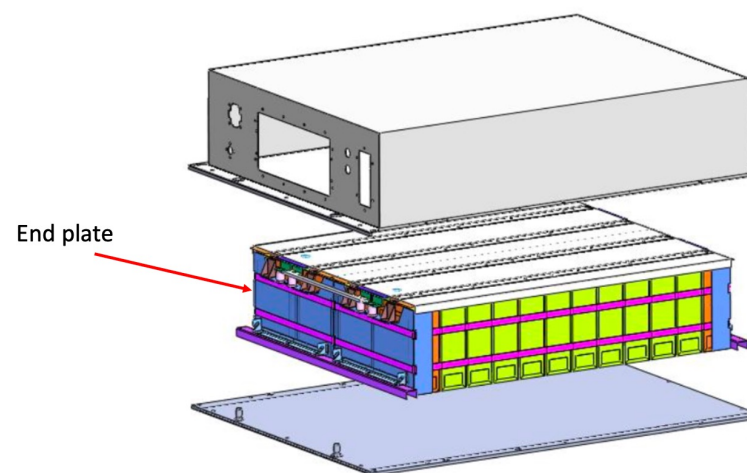
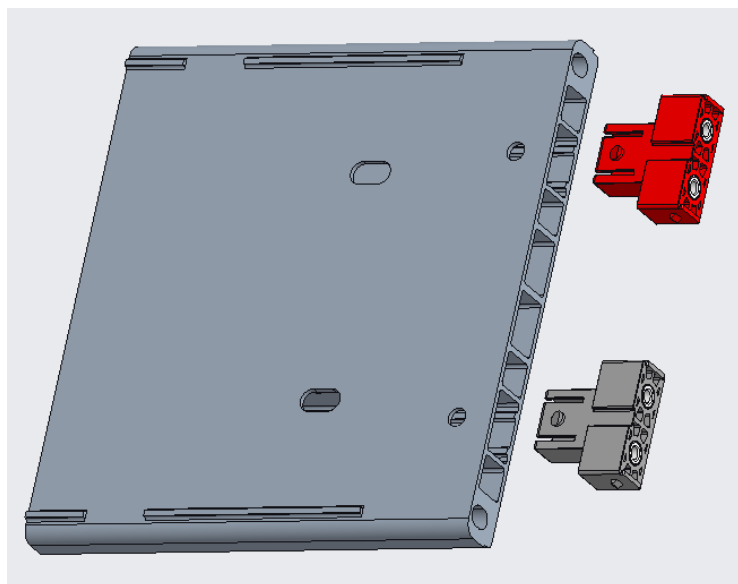
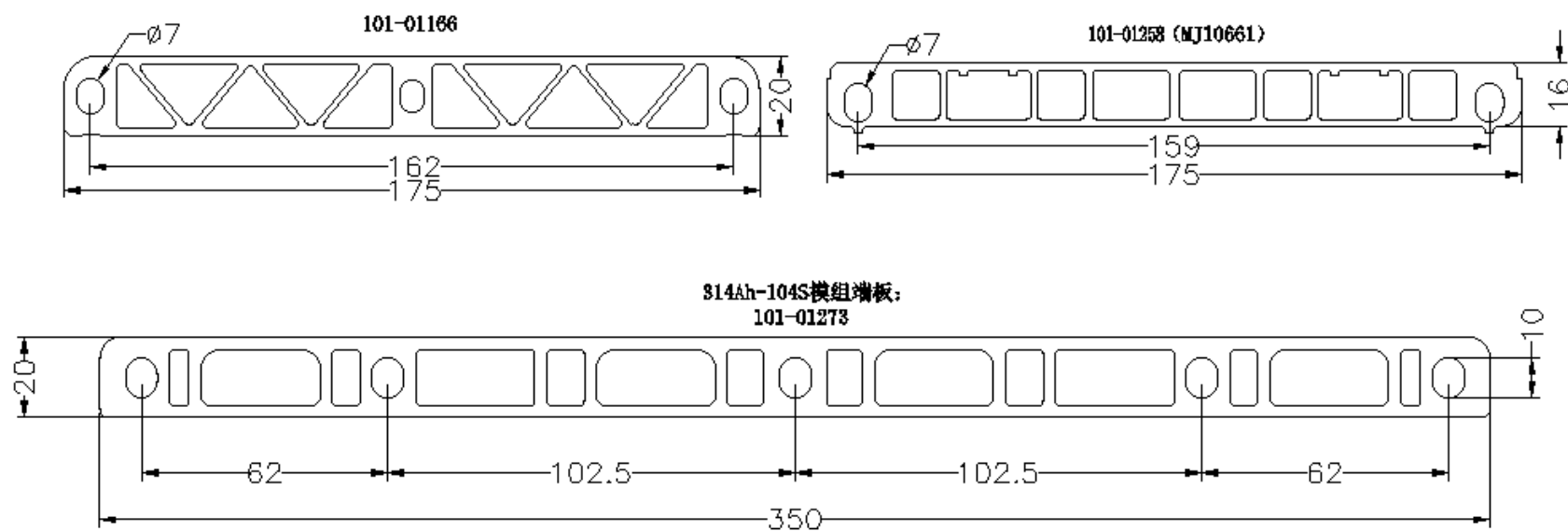
5-08-01487: 280Ah-52S



5-07-01540/1582: 314Ah-104S1P

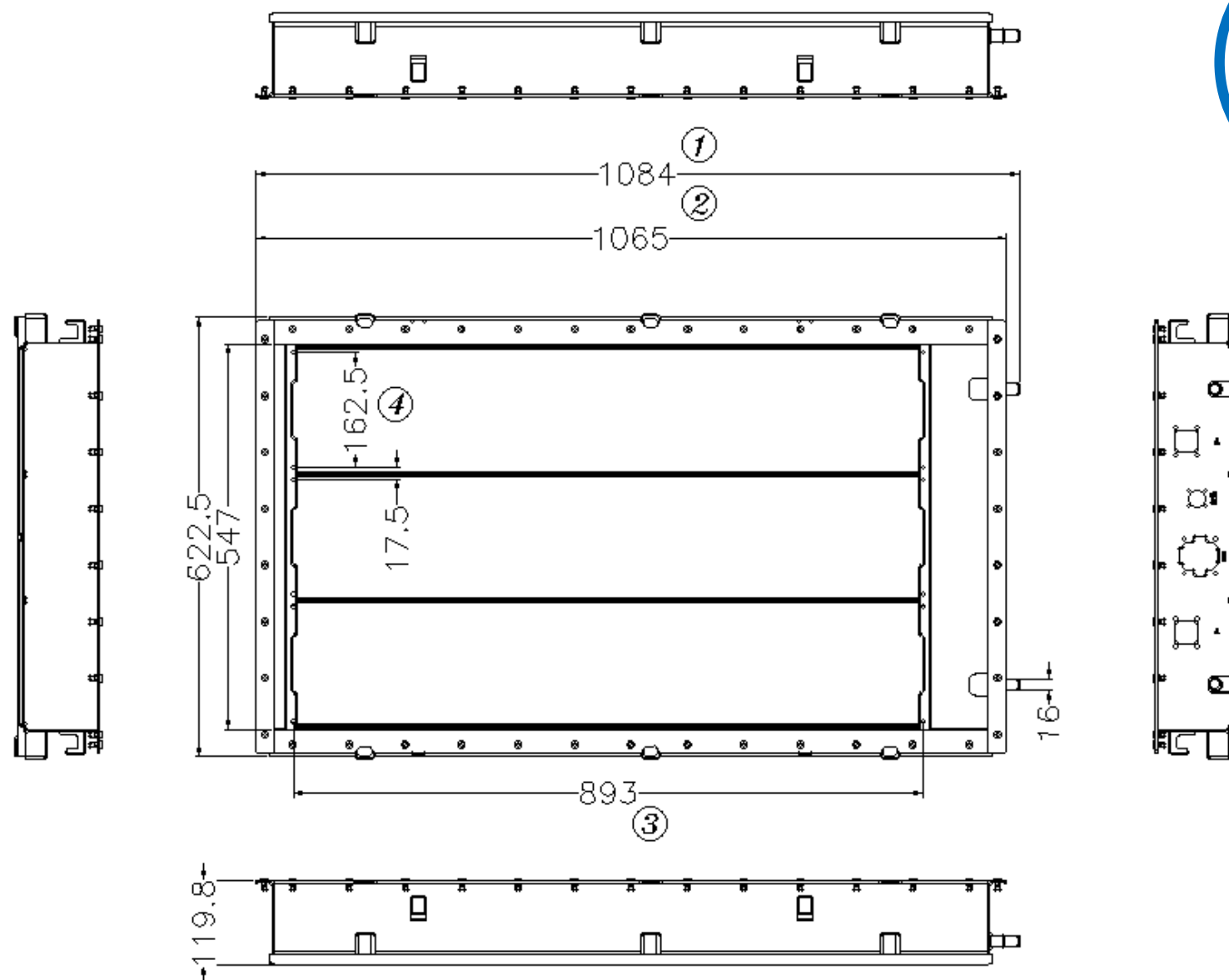


5-07-01573: 280Ah-52S1P

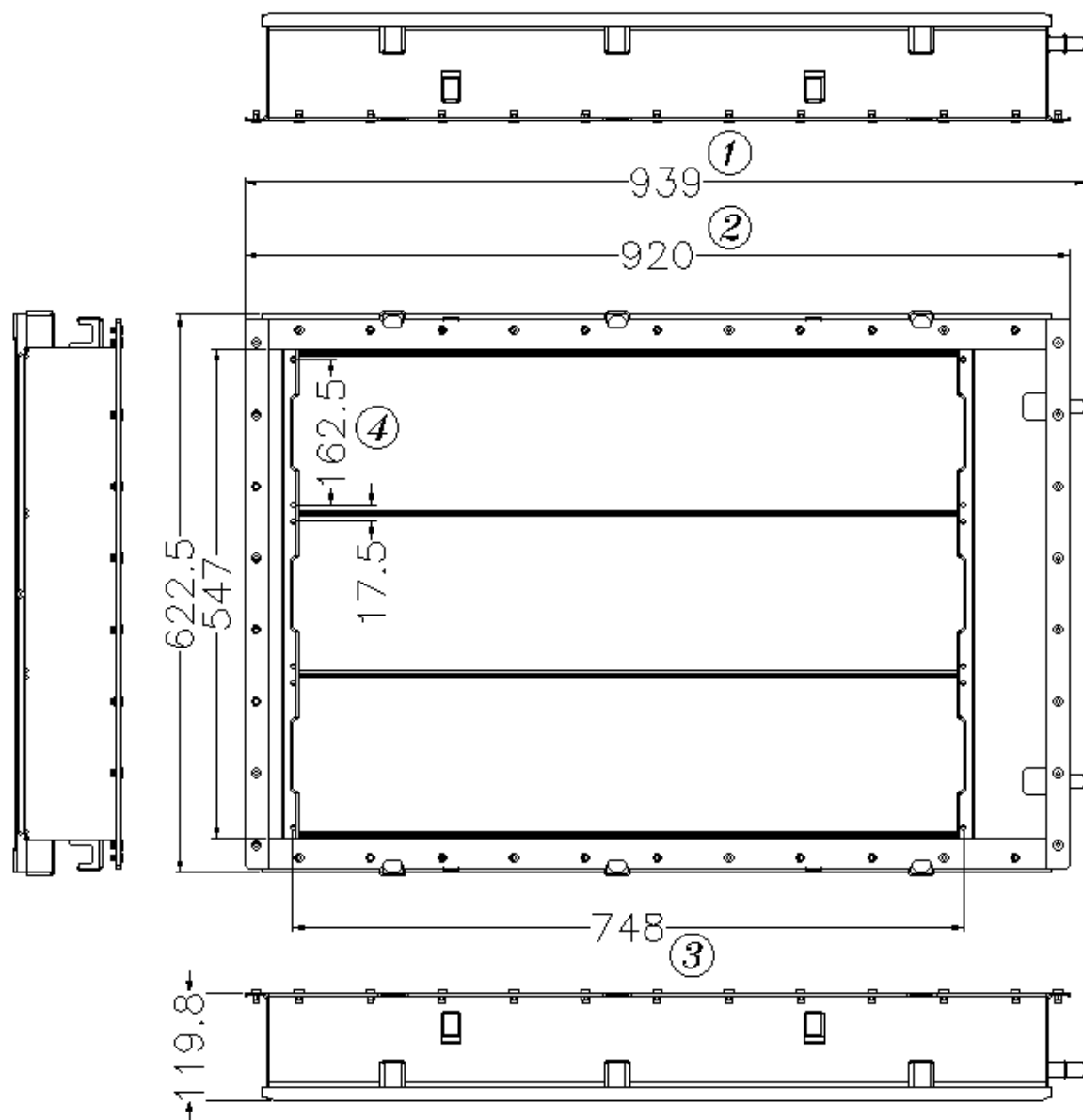


EV/ESS

Applicable



5-07-01592; 304Ah-36S1P



EV/ESS

Applicable

5-07-01593: 304Ah-30S1P